



# PSOPHIA PROJECT

Presentation

ETPIS (EU-VRI)

Stuttgart, 23.05.13



**“Co Funded by The Prevention, Preparedness and Consequence Management of Terrorism and other Security-related Risks Programme of the European Union”**



Increasing Security Awareness of Critical Infrastructure  
Operators introducing Intelligence Techniques and focusing on Psycho-social and Human factors



# Co Funded by CIPS Programme

The Prevention, Preparedness and Consequence Management of Terrorism and other Security-related Risks Programme in 2012

## Objective 1: Prevention and Preparedness of risks

Stimulating, promoting and supporting the development of Methodologies for the protection of CI, in particular, risk assessment methodologies. 15 months

“Co Funded by The Prevention, Preparedness and Consequence Management of  
Terrorism and other Security-related Risks Programme in 2012 (CIPS)”



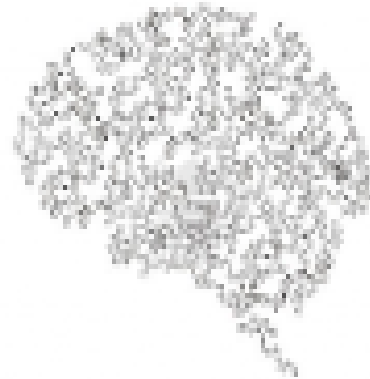
Increasing Security Awareness of Critical Infrastructure  
Operators introducing Intelligence Techniques and focusing on Psycho-social and Human factors

## PARTNERS



## 2. MAIN OBJECTIVE

**Increasing security awareness of critical infrastructure operators, adding a Human Intelligence perspective that focuses on psycho-social factors and their importance and implications towards protecting CI.**



**PSOPHIA**

Increasing Security Awareness of Critical Infrastructure Operators introducing Intelligence Techniques and focusing on Psycho-social and Human factors

# 1. BACKGROUND



The **Security approach** from various perspectives:

- Security consultants
- IT systems
- production and control engineering
- security threats and protection

➤ **Convergence of Safety and Security** in industrial (including critical) infrastructure protection and resilience.

Integration of safety and security in risk assessment methodologies for analysing security consequences from:

- natural hazards,
- technology accidents
- cascade effects (Fukushima)
- information security: cyber security for Industrial control systems and SCADA

# Challenges related to organisational and human factors:

- Lack of coverage of psycho-social factors within existing risk analysis and risk management plans
- Prevalence of a Safety approach (not Security)
- Plans should:
  - Evaluate and **integrate security vulnerabilities originated by the operators' specific psycho-social conditions** like personality traits, weaknesses, stress, family situation, needs, social interaction, behavior, etc.
  - Contemplate the **coordination with Safety and Human Resources Departments** in order to consider them in job descriptions, selection processes or access and handling authorizations.

**Safety Assessment**

**Human-centred  
analysis**

**Process risk  
evaluation**

**Security should follow suit**

A common approach would be necessary to support and coordinate actions and responsibilities from: Human Resources/Personnel and Safety and Environment protection in Production/Operation, Organization, Security and infrastructure protection.







# To participate, please contact:

**Javier Larrañeta**

Secretary General, PESI

[javier.larraneta@tecnalia.com](mailto:javier.larraneta@tecnalia.com)

Móvil: +34 629274037

**Olivia Gualda**

PSOPHIA Project Coordinator

[secretaria@pesi-  
seguridadindustrial.org](mailto:secretaria@pesi-seguridadindustrial.org)

Mob: +34 633231845